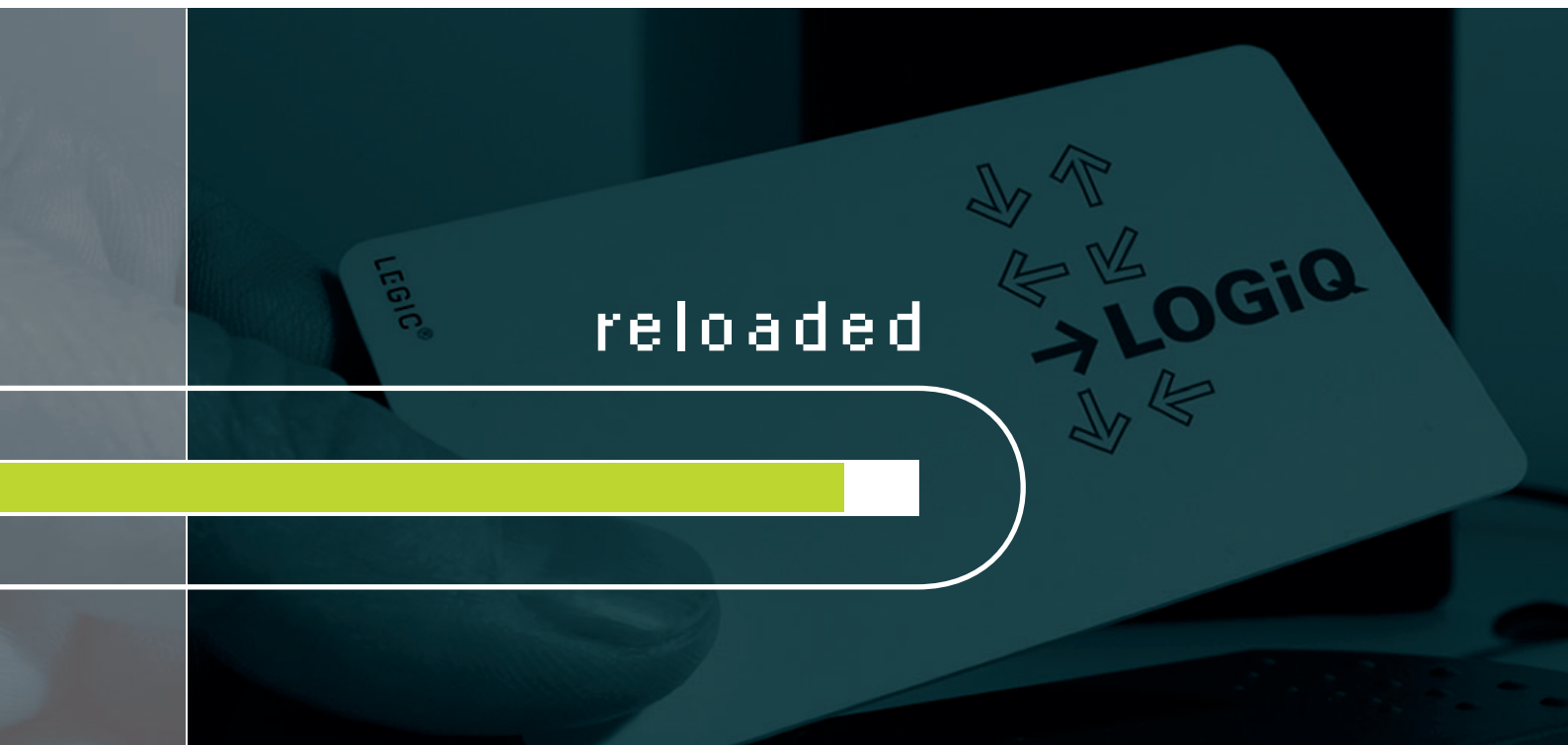
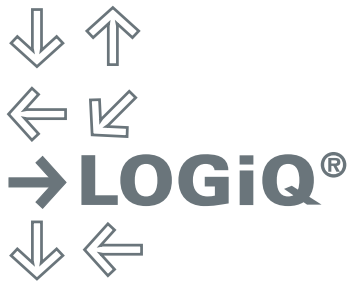


LOGiQ®

The new generation in automated shipping processes.



Save time and money by automating logistics.
A simple and logical solution.



Save time and money by automating logistics using a tailored solution

Problem-free and efficient production processes are keys to a well organised flow of goods. The material needed must be available at the right time, at the right place and in just the right quantity.

LOGiQ® is a logistics solution for the bulk materials and cargo industry. It automates all procedures from ordering through to shipment. LOGiQ® controls the flows of goods to and from the production processes. It also ensures that data is exchanged between the process and commercial systems in a fully automated manner.

LOGiQ® is able to respond flexibly to the customer's needs through its use of numerous coordinated hardware and software modules. The solution is used in the chemicals, steel and cement industries as well as for waste and paper management.



LOGiQ® is middleware for automating the planning and loading of bulk materials and cargo.

Benefits for you

Save time

- ❖ 24-hour loading – during and after regular working hours
- ❖ Faster loading thanks to accurately defined processes
- ❖ Instructions made available automatically and immediately
- ❖ Electronic data input and printout without no delays
- ❖ Automatic exchange of data with various host systems
- ❖ Simple, self-explanatory user interface for smooth operation

Raise quality levels and avoid mistakes

- ❖ Tamper-proof loading
- ❖ Avoidance of incorrect loadings and mixed quality levels
- ❖ Zero-maintenance components
- ❖ Dialogue guide available in relevant language



Raise efficiency levels

- ❖ Defined work processes supplement one another seamlessly
- ❖ Faultless documentation
- ❖ Flexible design, tailored to every special application

Cut costs, maximise profits

- ❖ Maximise profits through perfectly coordinated processes
- ❖ Reduction in operating costs for shipping and order processing
- ❖ Improved competitiveness through technological advance
- ❖ Reduction in installation and maintenance costs thanks to state-of-the-art technologies
- ❖ International service and support from our subsidiaries

Turn incredible potential savings into reality!

When transporting products by truck, rail or ship, more and more well-known companies are putting their trust in LOGiQ®. The logistics solution features state-of-the-art modules with a flexible configuration, forming a chain that pays off in many respects.

Assure quality – avoid mistakes!

All processes are efficiently synchronised with one another. Clear, secure – comprehensible at all times. Mistakes are avoided and the logistics processes can be documented in full. Comprehensible at all times – and can be accessed again later for further use.

Flexible, compatible - your link to the future!

In addition to offering a multitude of precisely coordinated standard options, each variation can be extended - configured perfectly and tailored to individual structures and processes. To satisfy your needs today and tomorrow and for virtually all sectors.



Perfect-fit solutions that pay back!

LOGiQ® uses components that can be precisely tailored to any existing infrastructure.

For example, by using contact-free ID cards and terminals coordinated precisely to the application which can be operated by both the suppliers and customers. These open doors and gates as if by magic, activate controls and carry out defined unloading and loading processes - mostly without the need for operating staff. LOGiQ® saves valuable resources by the hour where it really counts.

Efficiently raise quality standards!

A system will only be effective if it can be used seamlessly for special logistics requirements. To ensure that it does every i, LOGiQ® uses modules with a flexible configuration. These are individually matched and can be integrated perfectly into existing structures and systems.

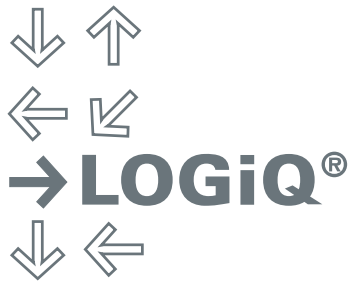


Load with peace of mind. It's worth it.
Material and weight monitoring means no loss of quality or damages for incorrect loading.



Even darkness isn't a problem.
LOGiQ® makes operations possible 24 hours a day, 7 days a week. Simple and efficient loading even when the plant is shut.





The new generation in automated shipping processes.



Alongside obvious attributes like stability and flexibility, LOGiQ® is the first such product suitable for any operating system. Its Java-based programming means that LOGiQ® can be used regardless of the operating system.

One key feature is that areas of work can be split up with no negative impact. Totally disconnecting the layers of data ensures that databases and views are fully independent. LOGiQ® gives you a whole new scope for designing your customer portals.

By using web browser technologies, LOGiQ® makes proprietary software installation a thing of the past. Totally separating the individual layers of software (multi-layer) makes much simpler administration possible. This greatly cuts costs in service and support.

- ❖ **Flexible**
- ❖ **Scalable**
- ❖ **User-friendly**
- ❖ **Stable**
- ❖ **Easy to maintain**

LOGiQ® modules

LOGiQ® from Schenck Process. A logistics system, featuring state-of-the-art modules with a flexible configuration that delivers a perfect logistics process chain.

Virtually any system size can be handled thanks to the consistent orientation towards distributed system modules. However, consistent management of user rights was used right from the start to ensure that only authorised persons receive information.

LOGiQ® AccessManager

Controls the points for accessing the premises when the plant is both manned and unmanned.

LOGiQ® ParkManager

Efficient utilisation of the loading and unloading points without queues building up or points lying empty.

LOGiQ® WeighManager

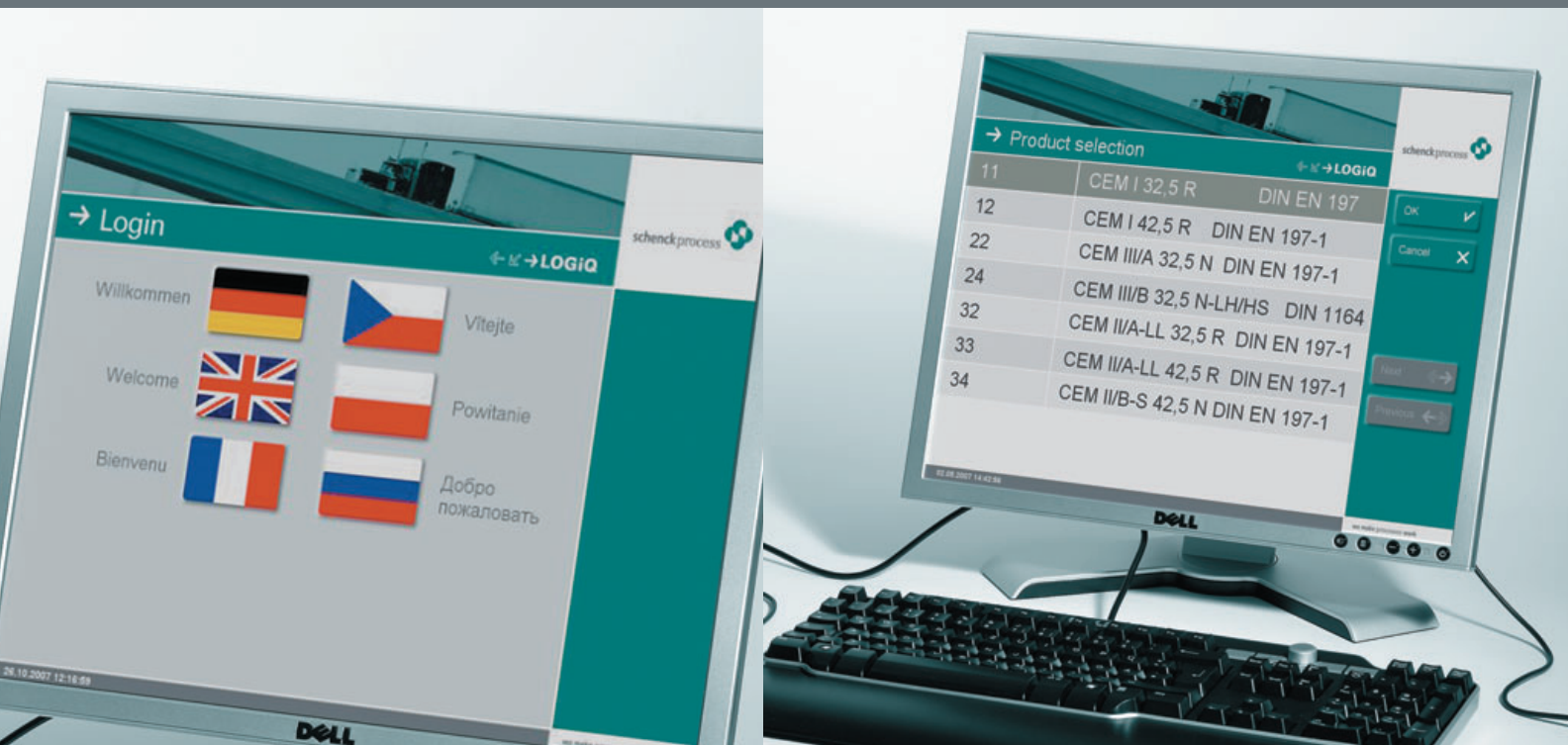
Automatic control of weight measuring system in the entry and exit area.

LOGiQ® LoadingManager

Provides convenient control of bulk loading points operated by a touch screen.

LOGiQ® ParcelledGoodsManager

For processing cargo orders using mobile touch panels.



LOGiQ® DispatchManager

The DispatchManager module can be used to record and manage transport orders in LOGiQ® directly.

LOGiQ® SelfDispatchManager

For independent creation and/or activation of transport orders by the truck driver.

LOGiQ® WebDispatchManager

For processing and creating transport orders and statistics via the browser interface.

LOGiQ® MasterDataManager

Provides all the access needed to create, process and delete master data in a plant installation.

LOGiQ® ContainerManager

Coordination of all container movements with accurate recording of the material left in the container and applicable times.

LOGiQ® PrintManager

Processing and output of all printed data.

LOGiQ® ERPManager

For communication with an ERP (Enterprise Resource Planning) system (e.g. SAP R/3).

LOGiQ® DataExchangeManager

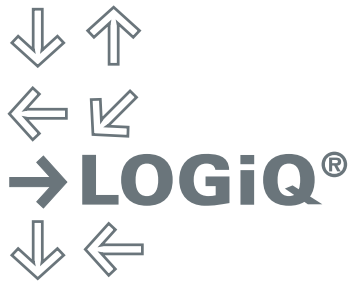
Provides various ways of communicating with external systems present in the plant.

LOGiQ® RemoteControlManager

Remote monitoring of terminals at loading points and on road vehicle scales with the option of remote control should problems arise.

LOGiQ® BackupManager

Simplifies the process of daily backups.



Perfect-fit solutions that pay back.



→ Planning and controlling



Data management

Handle planning on your standard PC systems. Integrated in an existing network. Can be extended in any way.

◆ **PC system**

Self Dispatching

All order planning is handled by the driver. Simple menu-guided touch screen operation.

◆ **Selfdispatch terminal**

LOGiQ® is perfectly matched to the Schenck Process product range, but also offers scope for easily integrating existing components.

Parking space management

Information boards show where or when to enter for loading or unloading.

◆ **Information boards**

Access monitoring

The contact-free ID card opens gates and barriers. Every step is logged with time and date.

◆ **Access terminal**

Bag material

Recording the number of bags. Registration of pallets added and removed. Simple menu-guided touch screen operation.

◆ **Mobile touch panel**



➔ **Log on**



➔ **Identify**



➔ **Load and unload**

➔ **Dispatch**

Traffic management

Traffic lights, barriers, ultrasonic sensors and induction loops point out the right way to go.

◆ **Traffic control**

Weight recording

Legal-for-trade weighing at the entrance and exit, or at the loading point itself.

The new DISOMAT® TERSUS with modern, clear user guidance.

◆ **Evaluation units**

Loading and unloading

The same ergonomics and operations for continuous or discontinuous weighing mechanisms.

Automatic loading by the driver.

◆ **Loading terminal**

Production of delivery note

Automatic production of a delivery note in single or multiple prints.

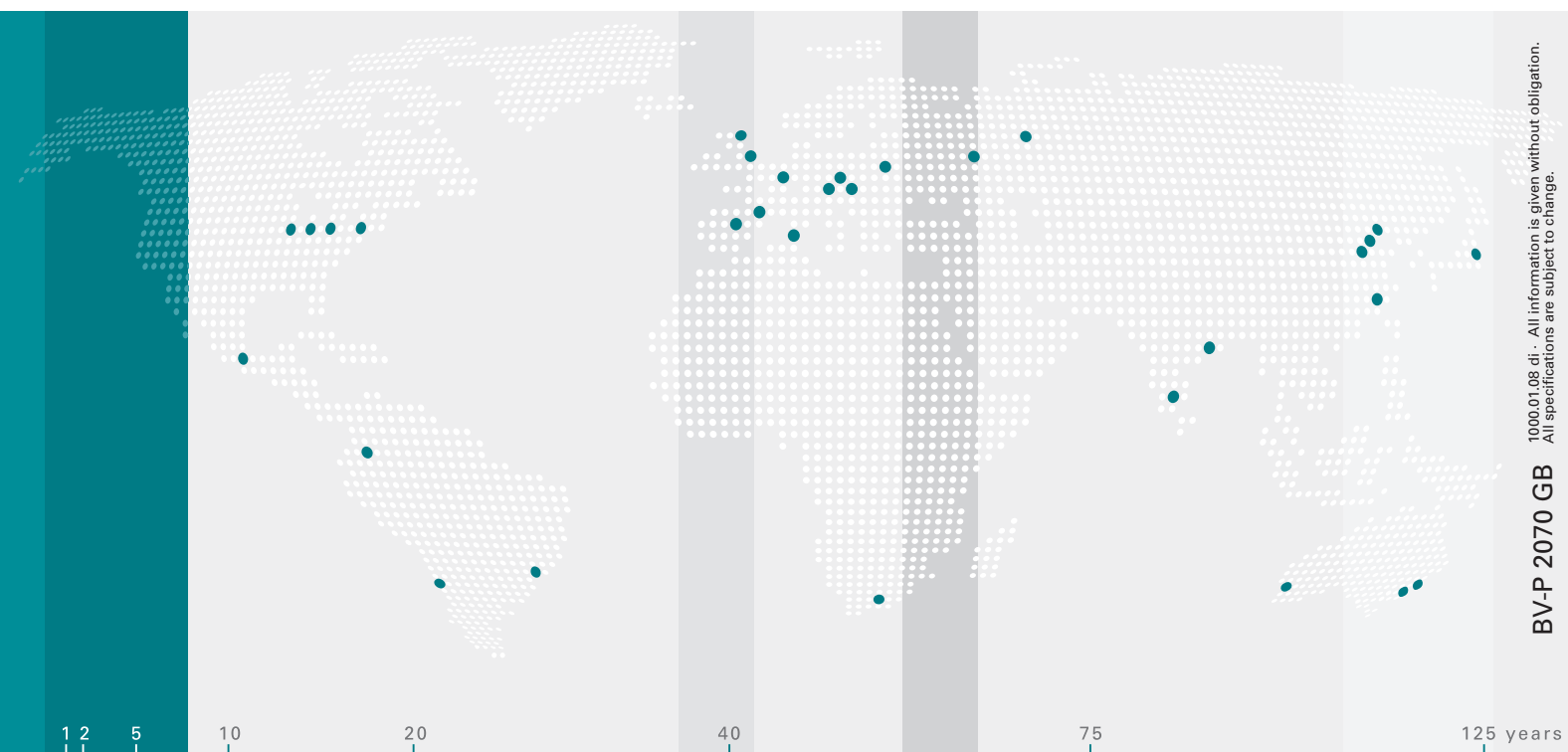
◆ **Delivery note printer**

weighing

feeding

screening

automation



1000.01.08 dt. - All information is given without obligation. All specifications are subject to change. BV-P 2070 GB

Schenck Process is the global market leader of solutions in measuring and process technologies in industrial weighing, feeding, screening and automation.

Schenck Process develops, manufactures and markets a full range of solutions, products and turnkey systems on the basis of combining process engineering expertise, reliable components and field-proven technology.

Schenck Process GmbH
 Pallaswiesenstr. 100
 64293 Darmstadt, Germany
 T +49 61 51-15 31 34 31
 transport@schenckprocess.com
 www.schenckprocess.com

we make processes work